

RIZE

ENTERPRISES, LLC



**TO ENSURE SYSTEM INTEGRITY USE ONLY
WITH CABLE SUPPLIED BY RIZE ENTERPRISES.**

PO Box 1311 Brentwood, NY 11717 Tel: 631-930-7532 www.rizellc.com

For all instructions and warnings, please visit our website.

Kwik-Locs®



The Rize Kwik-Loc® cable locks can be used as a fast and reliable way to suspend lighting, HID's, sound systems, cable trays, signage, and more. **Cable locks are to be used on static load applications only.**

Kwik-Loc Size	Part # Retail	Qty Retail	Part # 100/bx	Part # Bulk	Qty Bulk	Cable Size	Safe Working Load at 5:1 Safety Factor
KL50	30001	250 pcs	n/a	30370	1000 pcs	RWC1	5-35 lbs. (3-10 kg)
KL75	30044	100 pcs	30042	30043	500 pcs	RWC2	10-75 lbs. (5-34 kg)
KL100	30002	100 pcs	30347	30351	500 pcs	RWC3	25-150 lbs. (12-68 kg)
KL150	30003	50 pcs	n/a	30355	250 pcs	RWC4	25-250 lbs. (12-114 kg)
KL200	30004	20 pcs	n/a	30350	100 pcs	RWC6	50-640 lbs. (25-291 kg)
KL600	n/a	n/a	n/a	30344	50 pcs	RWC8	50-1,100 lbs. (25-500 kg)

Toggle

A toggle hanger is used for hanging light fixtures and other lighting applications. Different lengths are available, with RWC2 & RWC3 cable. They are offered in three styles; Y shape, V shape and single strand. We also offer the Y shape as a kit.

RWC3
Toggle

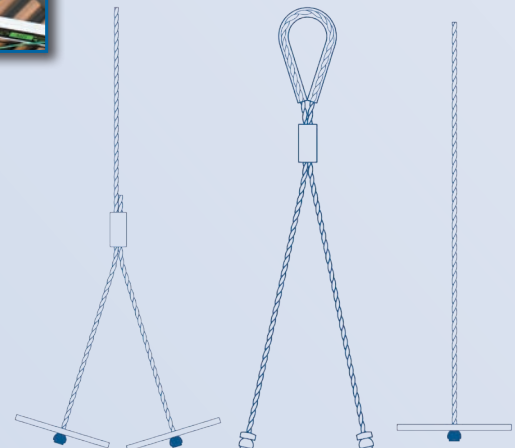


RWC2
Toggle



Item #	Code	Description
30264	RWC2S10PK	(2) RWC2 Single Cable 10ft. w/Toggle & (2) KL75 Kit
30263	RWC2S20PK	(2) RWC2 Single Cable 20ft. w/Toggle & (2) KL75 Kit
30274	RWC2Y12P10K	(2) RWC2 Cable x 10ft. 12" Y Toggle & (2) KL75 Kit
30194	RWC2Y18P5K	(2) RWC2 Cable 5ft.-18" Y Toggle & (2) KL75 Kit
30202	RWC2Y18P10K	(2) RWC2 Cable 10ft.-18" Y Toggle & (2) KL75 Kit
30205	RWC2Y18P15K	(2) RWC2 Cable 15ft.-18" Y Toggle & (2) KL75 Kit
30200	RWC2Y18P20K	(2) RWC2 Cable 20ft.-18" Y Toggle & (2) KL75 Kit

BULK TOGGLES AVAILABLE.



Cable

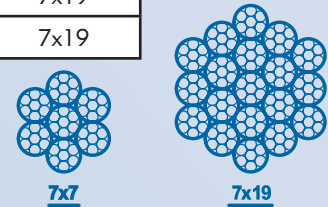
Galvanized steel cable supplied by Rize Enterprises is manufactured to exact standards and tested to verify the breaking strength. To ensure the safety and integrity of the hanging system use only cable supplied by Rize Enterprises with Rize cable locks.



Item #	Code	Description	Safe Working Load
30387	RWC1	Wire Rope for use with KL50 - 1000 Foot Roll	35 lbs
30380	RWC2	Wire Rope for use with KL75 - 500 Foot Roll	75 lbs
30381	RWC3	Wire Rope for use with KL100 - 500 Foot Roll	150 lbs
30382	RWC4	Wire Rope for use with KL150 - 500 Foot Roll	250 lbs
30383	RWC6	Wire Rope for use with KL200 - 250 Foot Roll	640 lbs
30397	RWC8	Wire Rope for use with KL600 - 250 Foot Roll	1,100 lbs

Cable Size	Tolerance	Construction
RWC1	+0.008/-0.00 in	7x7
RWC2	+.010/-0.005 in	7x7
RWC3	+.012/-0.006 in	7x7
RWC4	+.014/-0.007 in	7x7
RWC6	+.018/-0.009 in	7x19
RWC8	+5%/-0%	7x19

AVAILABLE IN STAINLESS STEEL UPON REQUEST

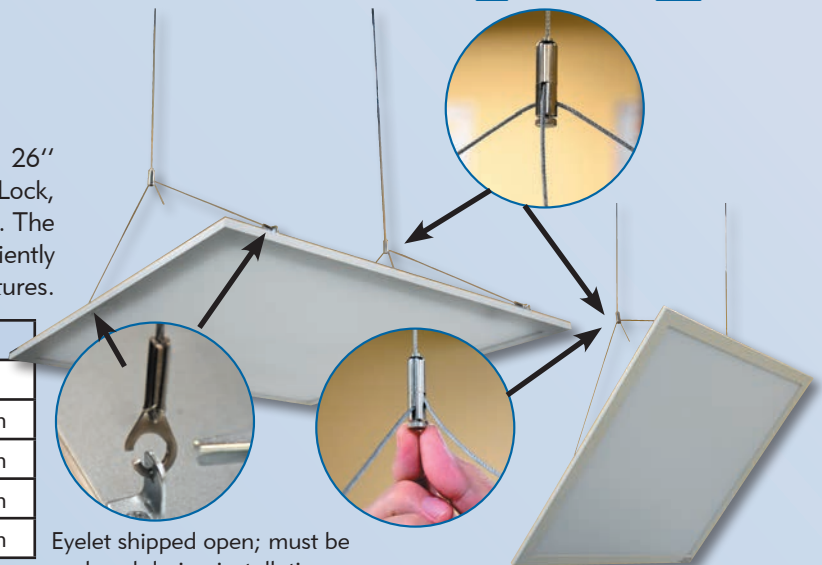


Flat Panel Kit

PATENT PENDING

Flat Panel Kits come with a 10 ft looped WC3 cable, a 26" double sided eyelet cable, and a side exit Kwik Grip Cable Lock, featuring a 12 lb. weight limit with a 5:1 safety factor ratio. The eyelets are constructed of 304 Stainless Steel and conveniently designed to fit the grid clip on most Flat Panel LED Light Fixtures.

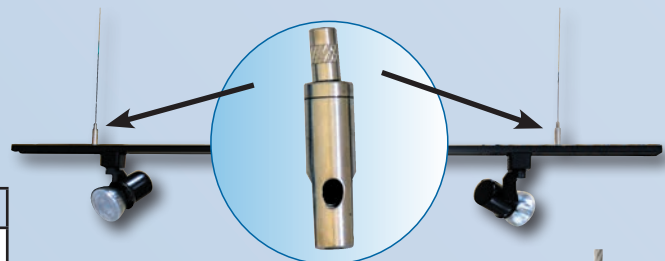
Item #	Code	Description
31023	FPGK2605	Flat Panel Gripper Kit 5ft x 26in
31024	FPGK2610	Flat Panel Gripper Kit 10ft x 26in
31025	FPGK2615	Flat Panel Gripper Kit 15ft x 26in
31018	FPGK2620	Flat Panel Gripper Kit 20ft x 26in
31026	FPGK2625	Flat Panel Gripper Kit 25ft x 26in



Track Hanger Kit

The Track Hanger is a light hanger which includes Looped Cable, Side Exit Kwik-Grip, and two different length 1/4-20 locking screws. 75 lb. working load limit.

Item #	Code	Description
30190	RWC2-20LCSEGK	RWC2 x 20ft. Looped Cable w/Side Exit Kwik-Grip & 2 1/4-20 Locking Screws



Strut Lock Assembly

The Strut Lock Assembly is a fast, lockable solution for installing Strut in single and multi-tiered arrangements, for HVAC and cable management. It is ideal for the suspension of rectangular duct, chilled beams, cable tray, unit heaters, etc. The ability to pre-fit the assembly into the strut channel on the ground, allows for minimal time working at heights. A threaded release cylinder allows for time saving height adjustment.

Item #	Code	Description
31032	RDSL2	Strut Lock for RWC2
31033	RDSL3	Strut Lock for RWC3
31034	RDSL4	Strut Lock for RWC4



Snap Hooks

A snap hook system is used for clipping onto lighting, cable basket and cable tray. It is available with either WC2 or WC3 cable. They are offered in three styles; Y shape, V shape and single strand. We also offer kits.

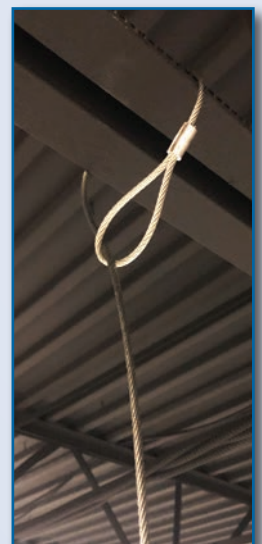
Item #	Code	Description
30081	RWC2Y18H5K	(2) RWC2 Cable 5ft. w/18" Y Snap Hook & (2) KL75 Kit
30013	RWC2Y18H10K	(2) RWC2 Cable 10ft. -18" Y Snap Hook & (2) KL75 Kit
30083	RWC2Y18H15K	(2) RWC2 Cable 15ft. -18" Y Snap Hook & (2) KL75 Kit
30187	RWC3Y18H5K	(2) RWC3 Cable 5ft.-18" Y Snap Hook & (2) KL100 Kit
30201	RWC3Y18H10K	(2) RWC3 Cable 10ft.-18" Y Snap Hook & (2) KL100 Kit
30266	RWC3Y18H15K	(2) RWC3 Cable 15ft.-18" Y Snap Hook & (2) KL100 Kit
BULK SNAP HOOKS AVAILABLE.		



Looped Cable

Looped Cable enhances the Kwik-Loc suspension system by the addition of a pre-looped cable end. Once the wire rope is pulled around the anchor point and through the looped end of the cable, it is already secured at one end, saving time at the job site. The remaining wire rope "drop" is passed through a channel in the Rize Kwik-Loc. Then, the wire rope is either wrapped around the equipment or inserted through a fastening point and back up into the second channel of the same cable lock.

Item #	Code	Description
30199	RWC2L5K	(2) RWC2 x 5ft. Cable Looped & (2) KL75 Kit
30260	RWC2L10K	(2) RWC2 x 10ft. Cable Looped & (2) KL75 Kit
30261	RWC2L15K	(2) RWC2 x 15ft. Cable Looped & (2) KL75 Kit
30025	RWC2L20K	(2) RWC2 x 20ft. Cable Looped & (2) KL75 kit
30128	RWC3L5K	(2) RWC3 x 5ft. Loop Cable & (2) KL100 Kit
30116	RWC3L10K	(2) RWC3 x 10ft. Loop Cable & (2) KL100 Kit
30120	RWC3L15K	(2) RWC3 x 15ft. Loop Cable & (2) KL100 Kit
30121	RWC3L25K	(2) RWC3 x 25ft. Loop Cable & (2) KL100 Kit
30130	RWC4L5K	(2) RWC4 x 5ft. Loop Cable & (2) KL150 Kit
30126	RWC4L10K	(2) RWC4 x 10ft. Loop Cable & (2) KL150 Kit
30131	RWC4L15K	(2) RWC4 x 15ft. Loop Cable & (2) KL150 Kit
30132	RWC4L25K	(2) RWC4 x 25ft. Loop Cable & (2) KL150 Kit
BULK CABLES ALSO AVAILABLE		



End Fixings

Rize offers a variety of End Fixings including:

- Toggles
- Snap Hooks
- Eyelets in: 90°, 45°, and straight variations
- Looped Cable
- Kwik-Stud
- 90° Bracket with Drive Pin



Scan to watch a video!



Canopy Kits

Rize offers a range of Canopy Kits that are available in both feed and non feed versions. Canopy Kits are supplied with all the parts needed to hang your fixture, from the canopy to the cable and Kwik Grip. These can be supplied with different lengths of cable and different types of Kwik Grips.



Security Kwik-Locs

Security Kwik Locs, like standard Kwik Locs, are to be used on static load applications only. However, Security Kwik-Locs offer more reliability in instances where your static load may become dynamic due to unexpected movement or strikes by flying objects.

Item #	Code	Cable Size	Safe Working Load at 5:1 Safety Factor
30335	SKL100	RWC3	25-150 lbs. (12-100 kg)
30336	SKL150	RWC4	25-250 lbs. (12-114 kg)
30337	SKL200	RWC6	50-640 lbs. (25-180 kg)
30045	SKL600	RWC8	50-1,100 lbs. (25-500 kg)



SKL100



SKL150



SKL200



SKL600

KV Support Bracket

The KV bracket fastens the cable lock to rectangular ductwork or signage with sheet metal screws. Once the KV assembly bracket is attached, the wire rope "drop" is passed into the entry hole at the top of the bracket, through the cable lock, and out the exit hole at the bottom of the bracket. The locking teeth inside the cable lock engage the wire rope and secure the system in place.

Item #	Code	Description
200121	KV75RWC2	Support Bracket w/ KL75 for use w/ RWC2 Cable
30298	KV100RWC3	Support Bracket w/ KL100 for use w/ RWC3 Cable



Patent #7,770,849



Starter Kits

Rize Starter Kits include everything you need to get started and finished early on the job. Their large labels also makes them ideal for use on a Rize product display.

INCLUDES:

- 1 Roll of Cable • 100 Kwik-Locs • 1 Cable Cutter
- 1 Custom Cable Counter Lid & Bucket

Item #	Code	Description
30398	KL75SK	English Starter Kit w/ Counter, KL75, Cutter & RWC2
30394	KL100SK	English Starter Kit w/ Counter, KL100, Cutter & RWC3



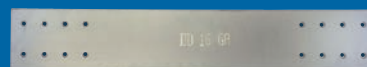
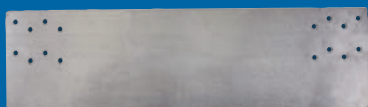
Hanging At Angles

Kwik-Locs can be used to suspend objects safely at angles of up to 60 degrees from the vertical. However, suspension at angles does reduce the safe working load per the table.

Size	Vertical	15°	30°	45°	60°
RWC8 Cable	1,100 lbs	1,060 lbs	950 lbs	775 lbs	550 lbs
RWC6 Cable	640 lbs	625 lbs	559 lbs	455 lbs	325 lbs
RWC4 Cable	250 lbs	240 lbs	215 lbs	175 lbs	125 lbs
RWC3 Cable	150 lbs	144 lbs	129 lbs	105 lbs	75 lbs
RWC2 Cable	75 lbs	72 lbs	64.5 lbs	52.5 lbs	37.5 lbs
RWC1 Cable	35 lbs	33.8 lbs	30 lbs	24.5 lbs	17.5 lbs
Load	100%	96%	86%	70%	50%

© 2021 Rize Enterprises, LLC
Printed in USA 7/20/2021 RBZ00012

Rize now manufactures a variety of Nail Plates & Stud Guards!



Available in Bulk. Please contact your Rize Sales Representative for more information.